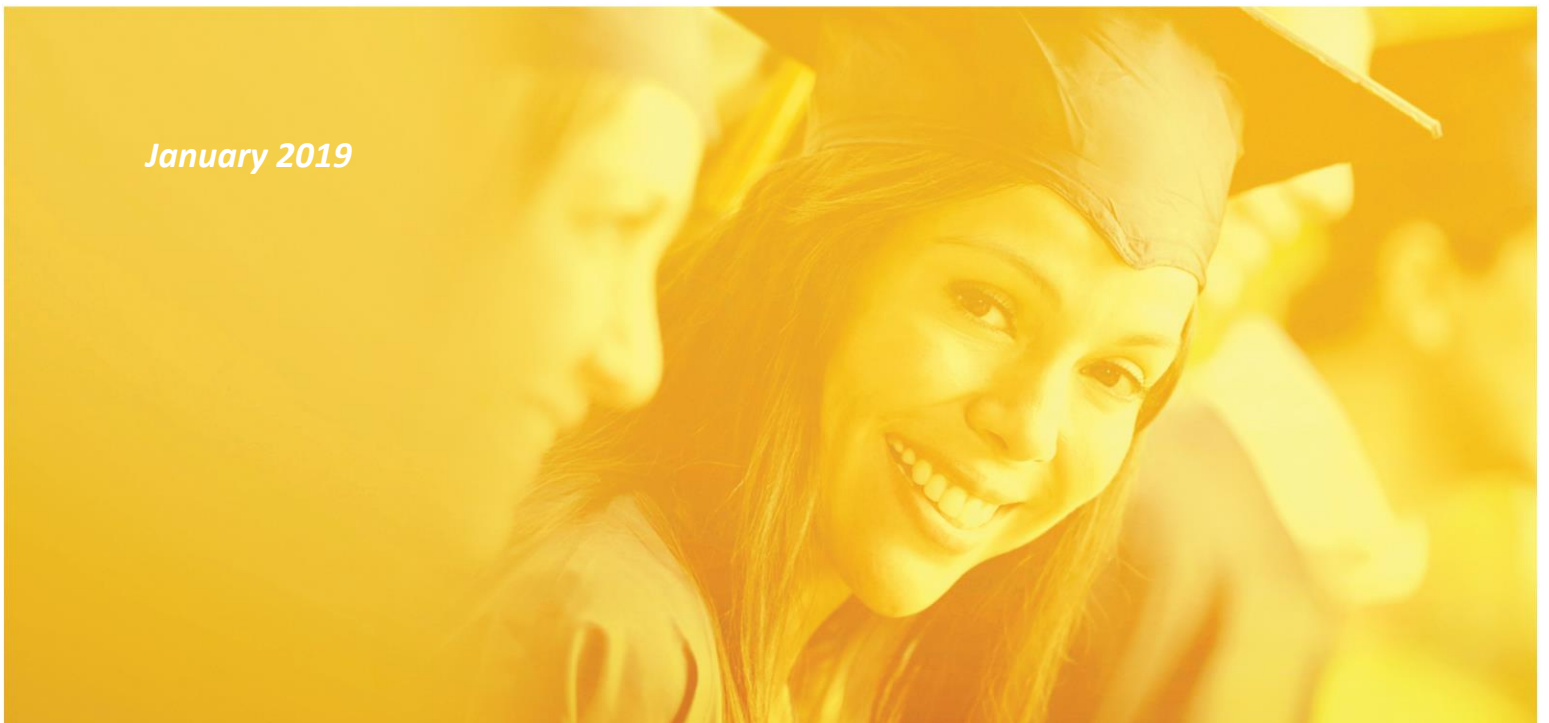




Army Educational Outreach Program
SEAP-CQL Essential Program Steps

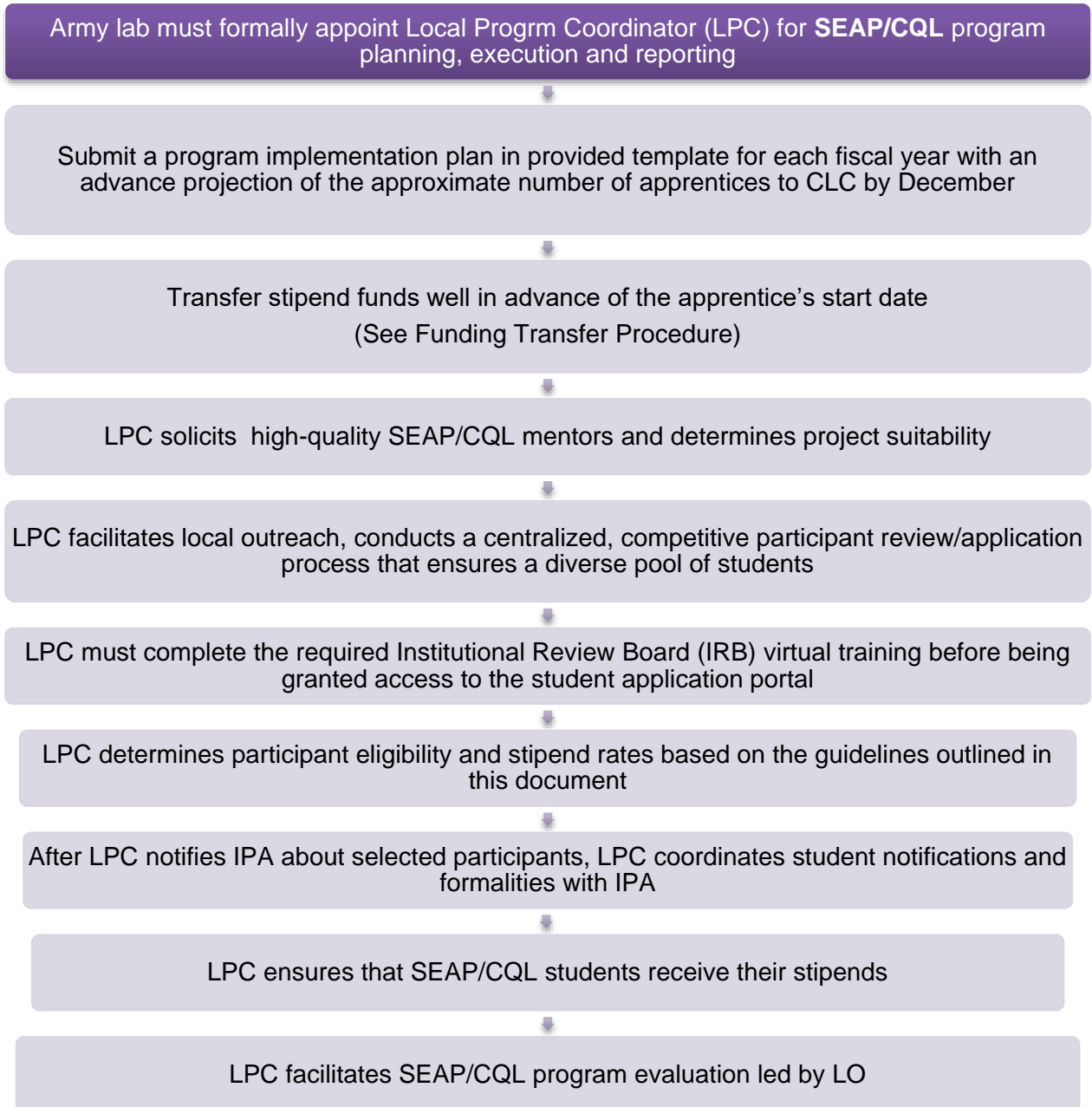


January 2019





Essential Program Steps





Program Timelines

SEAP/CQL	
November	Site website and application changes due
December	Site proposal due to CAM (projection of usage of SEAP/CQL, Jan-Dec)
November	SEAP Application window opens; CQL year-round (rolling)
February	SEAP Application window closes; CQL year-round (rolling)
January-February	Site visit coordination (for evaluations, by IPA, LO and/or CAMs)
November-March	Outreach for SEAP conducted; Outreach for CQL year round
April	IPA confirms eligibility/completeness of applications; IPA sends transcripts/supporting documents to LPCs for review.
April	LPCs facilitate applicant review/selection and submit list of accepted students to IPA
April	IPA sends student acceptance packages and collects student responses; sends final list back to LPCs
May-August	Student Apprenticeships ongoing; Program Evaluation Ongoing
September	After Action Meeting